

Ensuring Stable Housing:

# Warrick Place Apartments

*Affordability. Stability. Community.*



Shepherd Community believes that by focusing on building deeper relationships within our Shepherd neighborhoods, we will create a more stable, healthy community for all ages to better meet our neighbors' physical, emotional, spiritual, and academic needs.

Stable housing is an essential part of breaking the cycle of poverty, creating a sense of safety – both physically and mentally – for children and adults. In a housing crisis sweeping the nation, affordable housing is needed now more than ever, especially for the neighbors Shepherd serves.

**Warrick Place Apartments will serve as one of Shepherd's solutions to the need for stable housing:**

**Transit-oriented:** Strategically situated along the proposed Blue Line on E Washington St.

**Affordable:** These 11 apartments will address affordable housing challenges for HUD-defined categories: four units will be designated for Low Income, four units for Very Low Income, and three units for

Extremely Low Income.

**Capacity building:** Shepherd will have the opportunity to expand our impact within the community.

**Scholar House Program:** This development will explore a scholar house program dedicated to supporting women in the community, fostering educational opportunities, and empowering them.

**Hub for health & connection:** This location will focus on mental health and well-being through neighborhood partnerships.

**Community space:** a designated 3,000-sqft community space will allow our neighbors, partners, and renters to connect in authentic relationships.

Ensuring Stable Housing:

# Warrick Place Apartments

Most importantly, stable housing like Warrick Place Apartments allows our neighbors to build relationships and community with other neighbors who can help them in their time of need. Poverty creates isolation, while hope creates community. Warrick Place Apartments is just one way Shepherd Community is helping to build foundations of community and hope back in our neighborhood.

**You can help Shepherd bring stability, community, and hope back to our neighborhoods!**

**Pray** with and for Shepherd, our neighbors, and the construction team

**Donate** new or good-conditioned furniture

**Give** financially to finish the community space

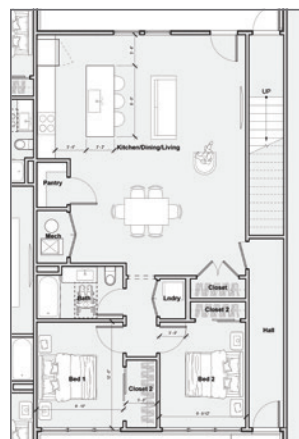


**Visit**  
[shepherdcommunity.org/  
foundations/](https://shepherdcommunity.org/foundations/)  
to give or scan the QR Code.

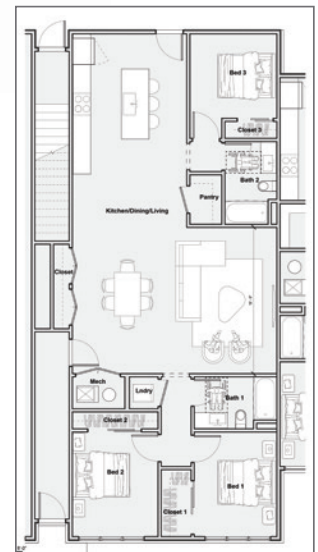
**Questions?** Contact Jay Height, Kolton Williford, or Dennis Westlake at 317-375-0203.



Site Plan



1 Bedroom



3 Bedroom

## About Shepherd Community:

Shepherd Community Center is a faith-based, nonprofit organization established in 1985 with a simple but staggering goal: to break the cycle of poverty on the near Eastside of Indianapolis through a Continuum of Care that meets the physical, emotional, spiritual, and academic needs of our neighbors from cradle to career - and beyond. Located centrally within the community it serves, Shepherd offers programs for children, teens, adults, and families. Our primary tools? Education and love.

**shepherd**  
community center