

*Ruby Project: The Next 40 Years*

# Shepherd Community Health & Wholeness Center

*Helping Neighbors Pursue Healthy, Whole Lives*



Shepherd Community exists to bring hope to children, teens, adults, seniors, and families living in the cycle of poverty on the near Eastside of Indianapolis through a Continuum of Care that meets the physical, emotional, spiritual, and academic needs of our community at large. Founded in 1985, Shepherd Community has served our neighbors for 40 years. What began as a simple Thanksgiving meal has now grown to serve over 10,000 unique individuals every year.

As Shepherd Community transitions into the next 40 years, we are focused on deepening relationships and expanding our ability to serve our neighbors right where they are. We're accomplishing this through a capital campaign we're calling The Ruby Project. One of the initiatives of the Ruby Project is expanding our current facility to create a full-size wellness and indoor playland for our community called the Shepherd Community Health & Wholeness Center.

The Shepherd Community Health & Wholeness Center will provide access to community resources, educational classes, and physical

fitness opportunities. It will serve our community at large as well as our current Shepherd students in Before- and After-School, Summer programs, and our fully-accredited non-public Christian school - Shepherd Community Academy. This new facility will also expand Shepherd's capacity to serve and fulfill our goal of serving 4X the number of students by 2030, including doubling the size of our Shepherd Community Academy to serve 300 students every school year.

Ruby Project: The Next 40 Years

# Shepherd Community Health & Wholeness Center



**Ruby**  
PROJECT

## The new Shepherd Community Health & Wholeness Center will include:

- Safe place for moms to bring their children, regardless of weather or time of year
- Recreational facility for our Academy, Before- and After-School, and Summer programming
- Mentoring sports leagues for youth whose talents and abilities must be encouraged beyond the courts.
- Classroom spaces for training, employment, and resource fairs
- Holistic Wellness Facility – physically, mentally, and financially
- A gathering space for fellowship and authentic community

## Construction of the new Shepherd Community Health & Wholeness Center will begin in 2026.

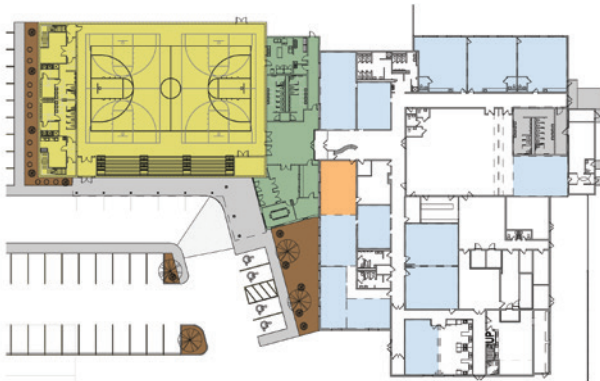
You've helped make Shepherd Community's first 40 years possible, and we need your continued support to thrive in the next 40. We need your financial support to make the Shepherd Community Health & Wholeness Center a reality and continue a legacy of hope for the next 40 years!

You can help Shepherd bring complete health, wholeness, community, and hope back to our neighborhoods!

## Questions?

**Jay Heigt**  
Executive Director  
jayh@shepherdcommunity.org  
317-375-0203

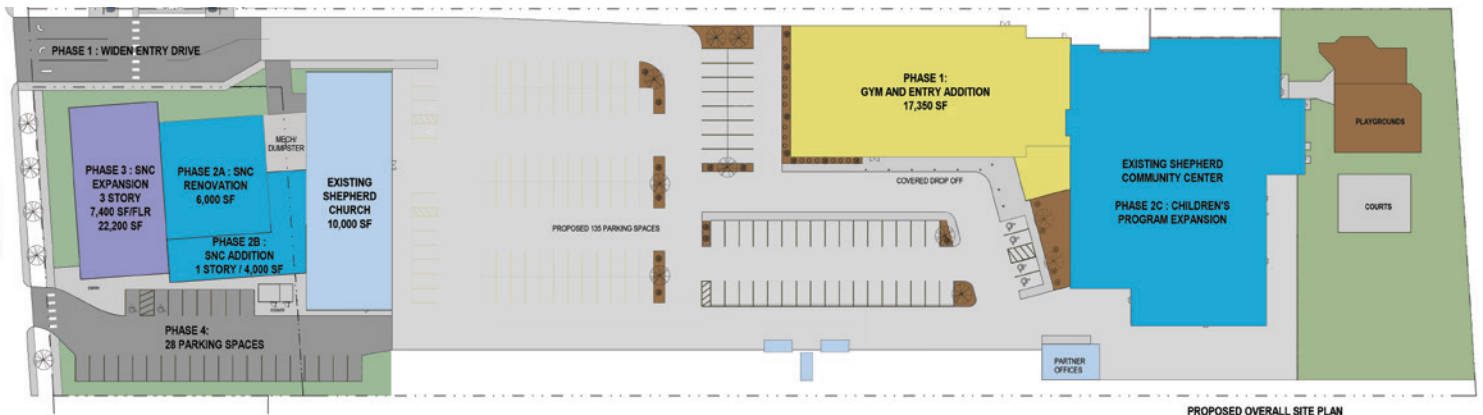
**Kolton Williford**  
Chief Development Officer  
Koltonw@shepherdcommunity.org  
317-375-0203 ext. 286



Shepherd Community Plan Detail



**Give Today at**  
[ShepherdCommunity.org/Ruby40](https://ShepherdCommunity.org/Ruby40)  
to give or scan the QR Code



Master Site Plan

## About Shepherd Community:

Shepherd Community Center is a faith-based, nonprofit organization established in 1985 with a simple but staggering goal: to break the cycle of poverty on the near Eastside of Indianapolis through a Continuum of Care that meets the physical, emotional, spiritual, and academic needs of our neighbors from cradle to career – and beyond. Located centrally within the community it serves, Shepherd offers programs for children, teens, adults, and families. Our primary tools? Education and love.

**shepherd**  
community center