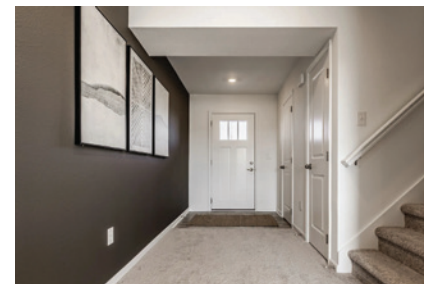


## Ruby Project: *The Next 40 Years*

# Building Foundations of Hope



Shepherd Community believes that by focusing on building deeper relationships within our Shepherd neighborhoods, we will create a more stable, healthy community for all ages to better meet our neighbors' physical, emotional, spiritual, and academic needs.

**Housing is essential to the holistic care of our neighbors.** Stable housing is necessary for adult employment and quality education for students. It creates safety and a sense of community for our neighbors. **So, what is Shepherd doing to help our neighbors find hope through stable housing - both now and for the next 40 years?**

**In partnership with Arbor Homes, Shepherd will construct 9 single-family homes** (three-bedroom, two bath) near Shepherd Community and within our neighborhoods. Upon qualification and graduation from our Homeowner University, Shepherd families will purchase these homes with a mortgage through partner banks at a significantly reduced market-value price, so their home will have instant equity. Building Foundations of Hope will extend beyond housing, though. **Similar to other organizational models, Shepherd will:**

- **Teach and train neighbors through Homeowner University**, a multi-year training program in which qualified, screened neighbors learn the foundational building blocks for successful homeownership:

attending financial classes, improving their financial stability, learning to care for their new home, understanding Shepherd's 10 Assets, and more.

- **Equip neighbors through a tool library and home-care related skills training**
- **Mentor and Coach** through personalized life coaching utilizing Shepherd's Paraclete program, volunteers, and church partners for relationship-based long-term care
- **Support our neighbors through Shepherd's wrap-around holistic services** to meet the physical, emotional, spiritual, and academic needs of the entire family pursuing homeownership.
- **Engage with other families in cluster communities** to create community ownership, advocacy, and connection.

**Building Foundations of Hope will build more than houses. It will strengthen families, marriages, and communities, investing in our neighbors and laying a foundation for holistic success and stability for future generations.**

Ruby Project: *The Next 40 Years*

# Building Foundations of Hope

Most importantly, quality housing allows our neighbors to build deeper relationships and community with Shepherd Community to help them break the cycle of poverty. Poverty creates isolation, while hope creates community. Building Foundations of Hope is just one way Shepherd Community is helping to break the cycle of generational poverty and create generational wealth and stability within our neighborhoods.



## Construction of three of the new Arbor Homes will begin in 2025.

You've helped make Shepherd Community's first 40 years possible, and we need your continued support to thrive in the next 40. We need your financial support to make the Foundations of Hope a reality and continue a legacy of hope for the next 40 years!

*You can help Shepherd bring stability, community, and hope back to our neighborhoods!*

- Pray with and for Shepherd, our neighbors, and the building crews
- Volunteer to mentor a family on their journey to homeownership
- Give financially to help make these homes attainable for our neighbors

## Questions?

**Jay Height**  
Executive Director  
jayh@shepherdcommunity.org  
317-375-0203

**Kolton Williford**  
Chief Development Officer  
koltonw@shepherdcommunity.org  
317-375-0203 ext. 286



**Give Today at**  
[ShepherdCommunity.org/Ruby40](https://ShepherdCommunity.org/Ruby40)  
or scan the QR Code.



## About Shepherd Community:

Shepherd Community Center is a faith-based, nonprofit organization established in 1985 with a simple but staggering goal: to break the cycle of poverty on the near Eastside of Indianapolis through a Continuum of Care that meets the physical, emotional, spiritual, and academic needs of our neighbors from cradle to career - and beyond. Located centrally within the community it serves, Shepherd offers programs for children, teens, adults, and families. Our primary tools? Education and love.

